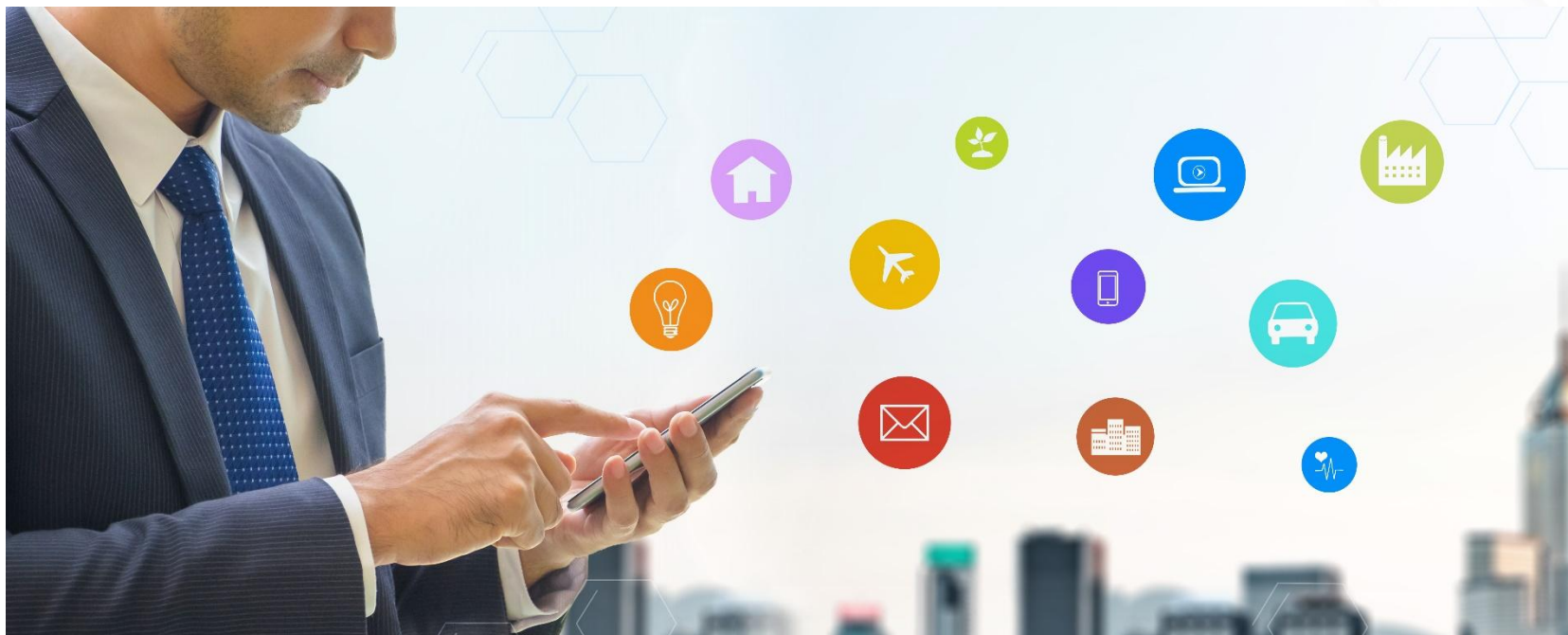




Internet de las cosas

Mejora nuestra forma de vida, conectando los dispositivos habituales entre ellos y con nosotros





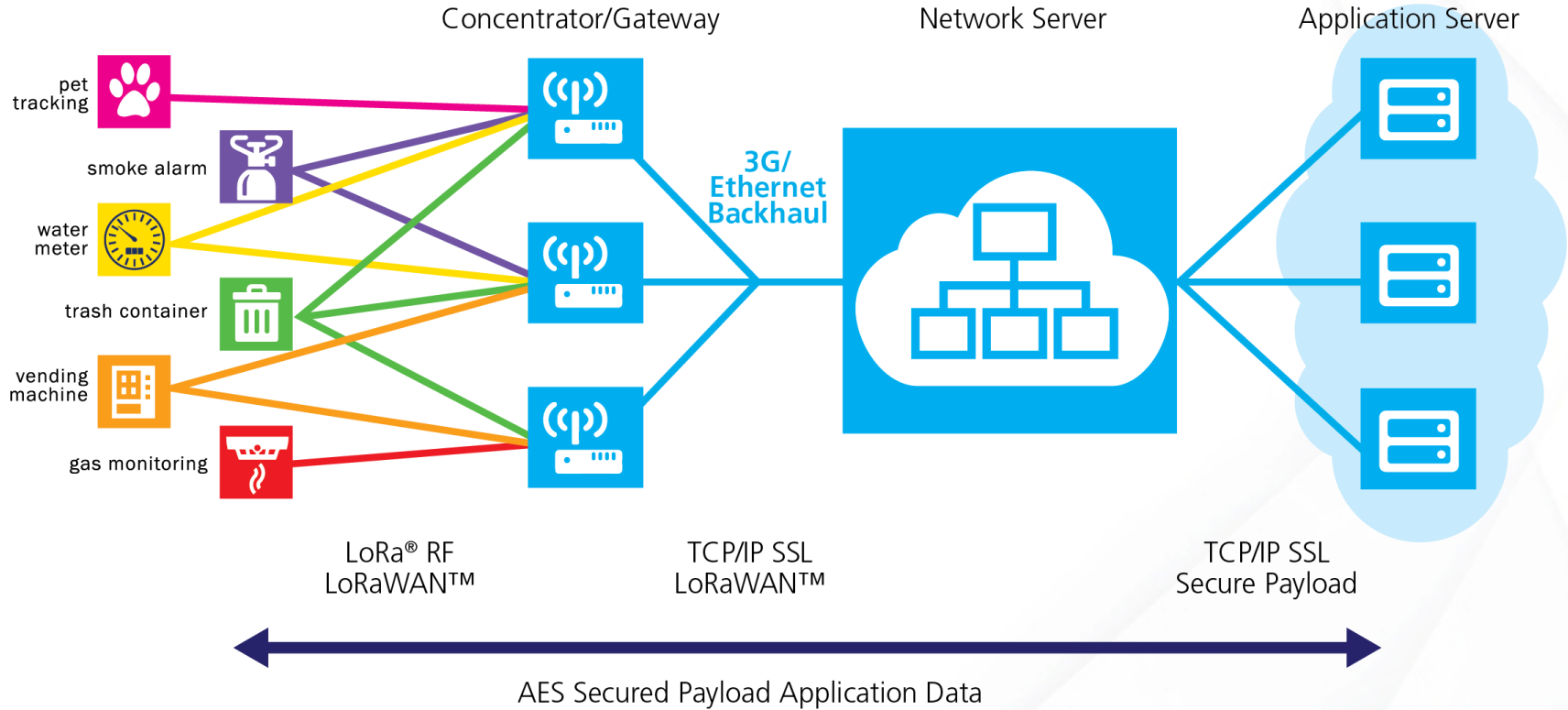
La tecnología...

LoRa[®] conectar redes LPWAN globalmente



IoT conecta al mundo, LoRa lo hace posible!

Red LoRaWAN™



Aplicaciones principales

Catalogo de mas de 400+ sensors para la mayoría de los negocios



CITIES



HOME &
BUILDINGS



METERING



SUPPLY CHAIN &
LOGISTICS



AGRICULTURE



INDUSTRIAL
CONTROL



HEALTHCARE



ENVIRONMENT

LoRaWAN™ networks worldwide coverage

96

Network Operators

64

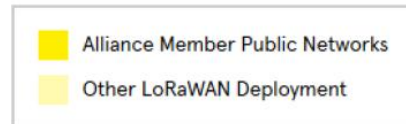
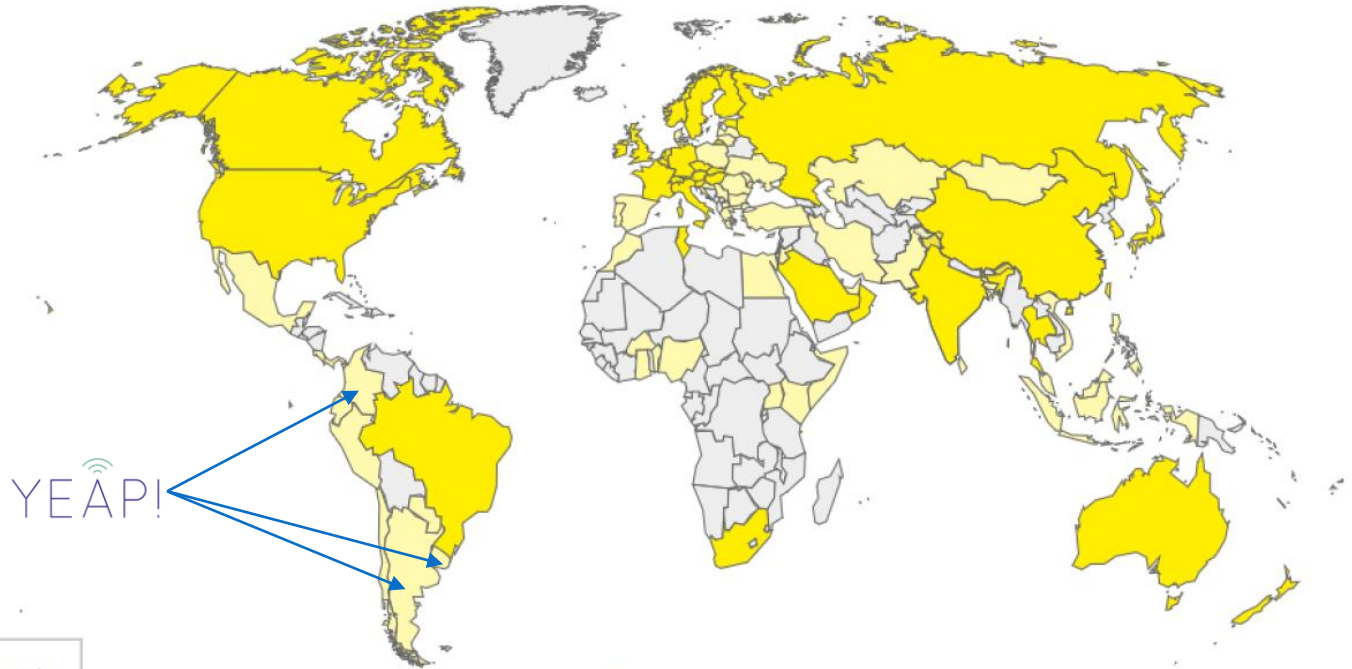
Alliance Member Operators

51

Countries operating in

100

Countries with LoRaWAN Deployments



La alianza sigue creciendo!!

LoRa Alliance™ Sponsor & Adopter Members

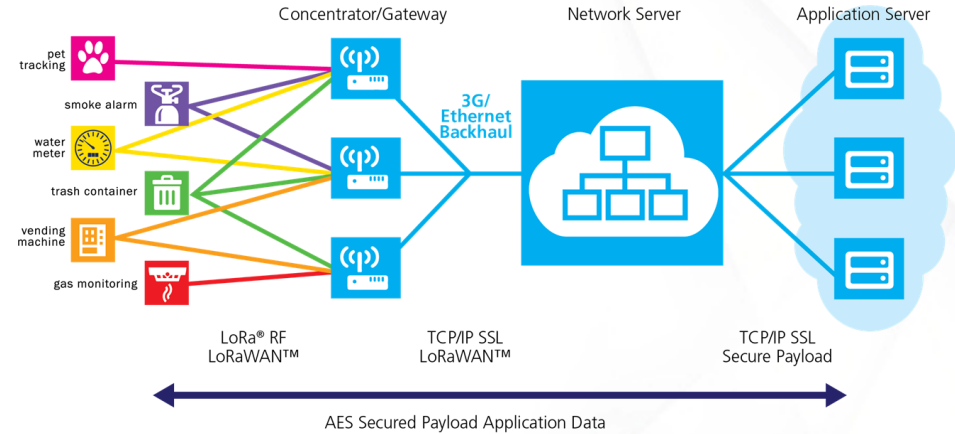
+ >300 Adopter Members



LoRaWAN modularidad a la medida de la agricultura inteligente

Gracias a las múltiples configuraciones de la red, se puede:

- Conectarse a una red pública, sin necesidad de invertir en infraestructura
- Expandir una red pública al lugar donde se necesite llevarla sin pagar licencias costosas
- Crear una red propia, privada, para aplicaciones específicas, **con o sin acceso a internet**





Las soluciones...



Monitoreo de ganado

Quantified Ag:

Health monitoring for feed lots



Medria:

Calving, heat detection, feeding monitoring, health monitoring

Caravan Argentina:

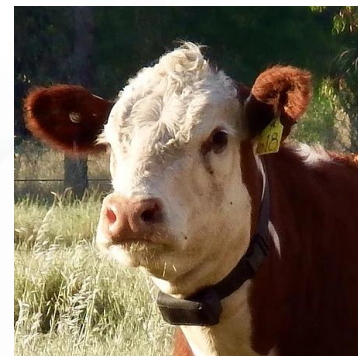
Animal health monitoring, heat detection, tracking





Rastreo de animales

- Alptracker
- Chipsafer
- Gemtek
- IoTag





Agersens Halter





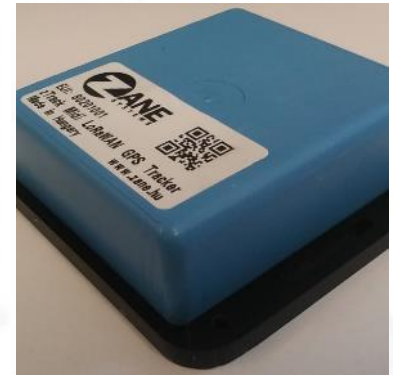
Rastreo de activos

Ffly4u: GPS + LoRa

Zane: GPS + LoRa

Gemtek : GPS + LoRa

Viloc : LoRa location only





Sensores de Nivel (agua, silos, etc)

Tekelek – Tank sensor

Wesroc – Tank sensor

NEMEUS – Level ultrasonic sensor





Gestion medioambiental

NKE Wateco

Copeeks

Sensys

ATIM

PolySense

Waterly Argentina

ERMA Argentina





Seguridad y control de accesos

Zane

XterConnect





Estaciones Meteorologicas

VisioGreen:
weather station

Sensys:
Rain gauge, luminosity, win speed, temperature

mcf88:
weather station

METOS by Pessi:
weather station





Monitoreo de suelo

Sensoterra: soil moisture solution

Teralytic: soil moisture, NKP, temp, conductivity sensor

Sensys: soil moisture

Decentlab: soil water potential

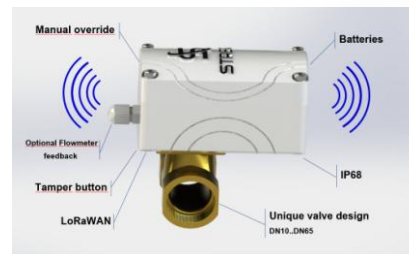
SenseFarm: soil moisture





Soluciones de riego

Netafim
Waterbit
STREGA





Casos de uso...



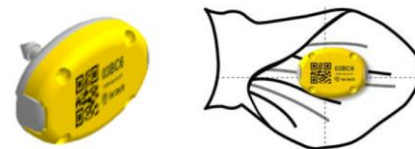
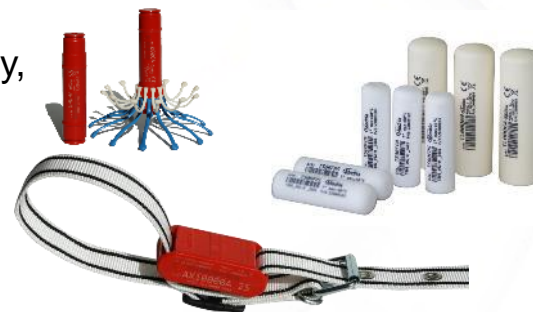
Challenge: Cattle monitoring

- The size of the heard is increasing and the farmer has to ensure quality, health, productivity with less time per animal :
 - Detecting heat on dairy cattle
 - Detect calving time
 - Detect sick cows in the herd

Solution/Benefits:

- Heat detection increased from 45 to 95 %
- Calving detection reduces by 60 % the mortality on calfs and cows
- Health issues detected 24 to 48h earlier, reduces medication consumption

- LoRaWAN Operator : None, only private networks so far
- Solution Provider: itk/Medria, Lar.Tech, ...





Soil monitoring



Challenge: soil monitoring

- The environmental pressure and race against better yield induces
 - Need of better understanding the impact fertilization
 - Reduce the use of treatments and prefer preventive ones

Solution/Benefits:

- Continuous monitoring of soil gives better vision of impact of fertilizer and allows adapted fertilization (20% reduction)
- Soil moisture monitoring will allow 20% consumption reduction in irrigation water

<https://www.youtube.com/watch?v=M7rUNLHpnKw>

<https://youtu.be/4RW6XorYpT8>

- LoRaWAN Operator : Senet, KPN, mainly private networks so far
- Solution Provider: Sensoterra, Teralytic





Informacion de contacto



CÁMARA ARGENTINA DE
Internet

Mauricio Jancic
Artimar Ltda
+54-911-3644-0385
mauricioj@artimar.com.br

Anthony Harris
CABASE
aharris@cabase.org.ar



CÁMARA ARGENTINA DE
Internet
1989-2019

30 años

www.cabase.org.ar

A person is sitting on a rooftop at night, looking at a smartphone. The background shows a city skyline with many lights, including a prominent building with a glowing dome. The scene is dimly lit, with the person's face and the phone screen being the main sources of light.